

**MODEL GR1600E
REDUCTION GEAR**

Model GR1600E is a heavy duty reduction gear having engine rotation that includes a clutch and mounts to an engine for a compact package with proper alignment. The gears are helical and carburized for ultimate strength and endurance. Gears are designed per AGMA specifications and are precision ground. The bearings are tapered roller and the case is cast iron. A wide variety of ratios are available.

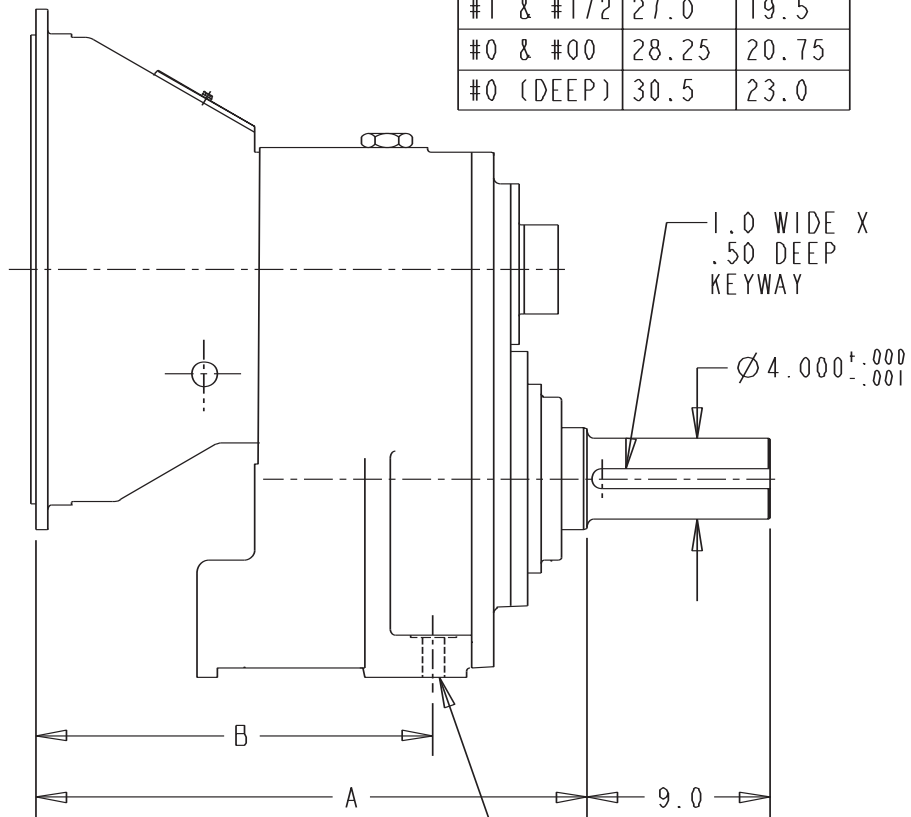
CAPACITY (nominal input torque):	2600 lb. ft.
MAXIMUM INPUT SPEED:	2200 RPM
RATIOS:*	1.28, 1.38, 1.48, 1.71, 2.0, 2.17, 2.35, 2.56, 2.80, 3.0
BELL HOUSINGS:	SAE #1, #1/2, #0, #00
CLUTCHES:	SP314, IBF314, SP218, SP318, IBF318, SP321
OUTPUT SHAFT:	4.000" diameter, 9" long with 1" x 1/2" keyway
REAR SUPPORT:	Two mounting feet are provided
LUBRICATION:	Lube pump is furnished 32 pints sump capacity
COOLING:	A heat exchanger is furnished
WEIGHT:	1700 lbs

*Note—Ratios above 2.0 to 1 can't be used with SP321 clutch 0599

07/31/03

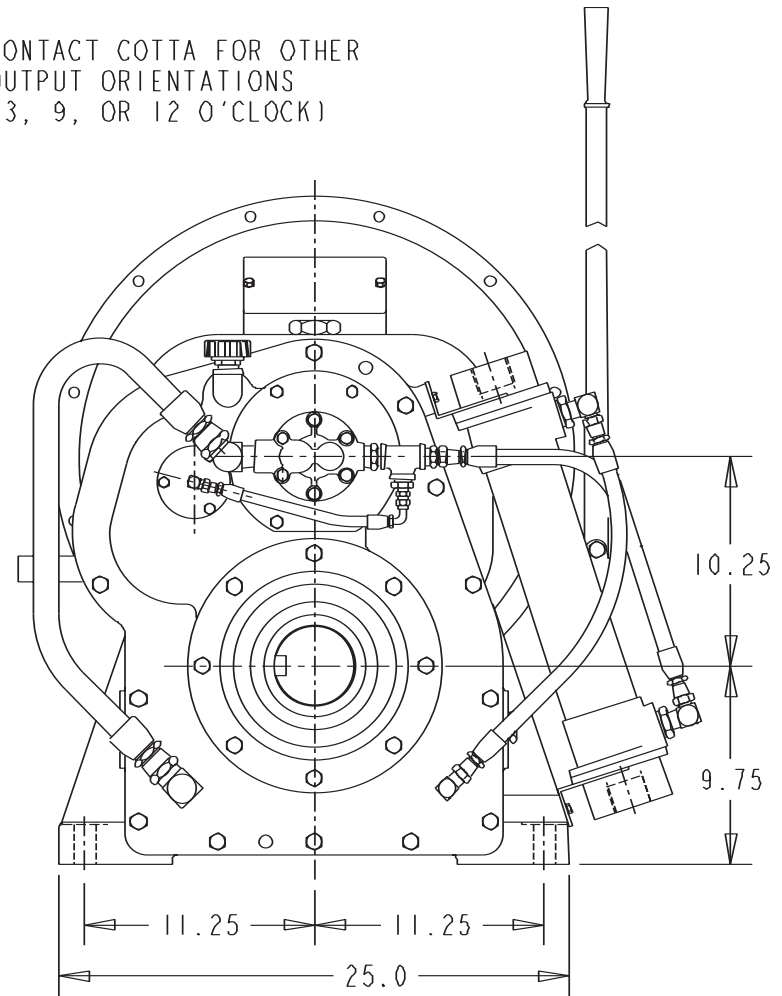
MODEL GR1600E REDUCTION GEAR

BELLHSG SAE#	DIM A	DIM B
#1 & #1/2	27.0	19.5
#0 & #00	28.25	20.75
#0 (DEEP)	30.5	23.0



$\varnothing 1.06$
TYP (2)
FOR GEARBOX
MOUNTING

CONTACT COTTA FOR OTHER
OUTPUT ORIENTATIONS
(3, 9, OR 12 O'CLOCK)



DO NOT USE DIMENSIONS ON THIS DRAWING FOR
INSTALLATIONS, USE CERTIFIED PRINT PROVIDED
WITH ORDERS.