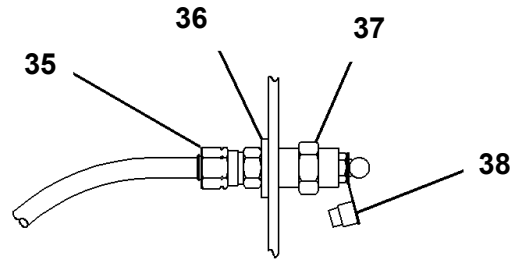
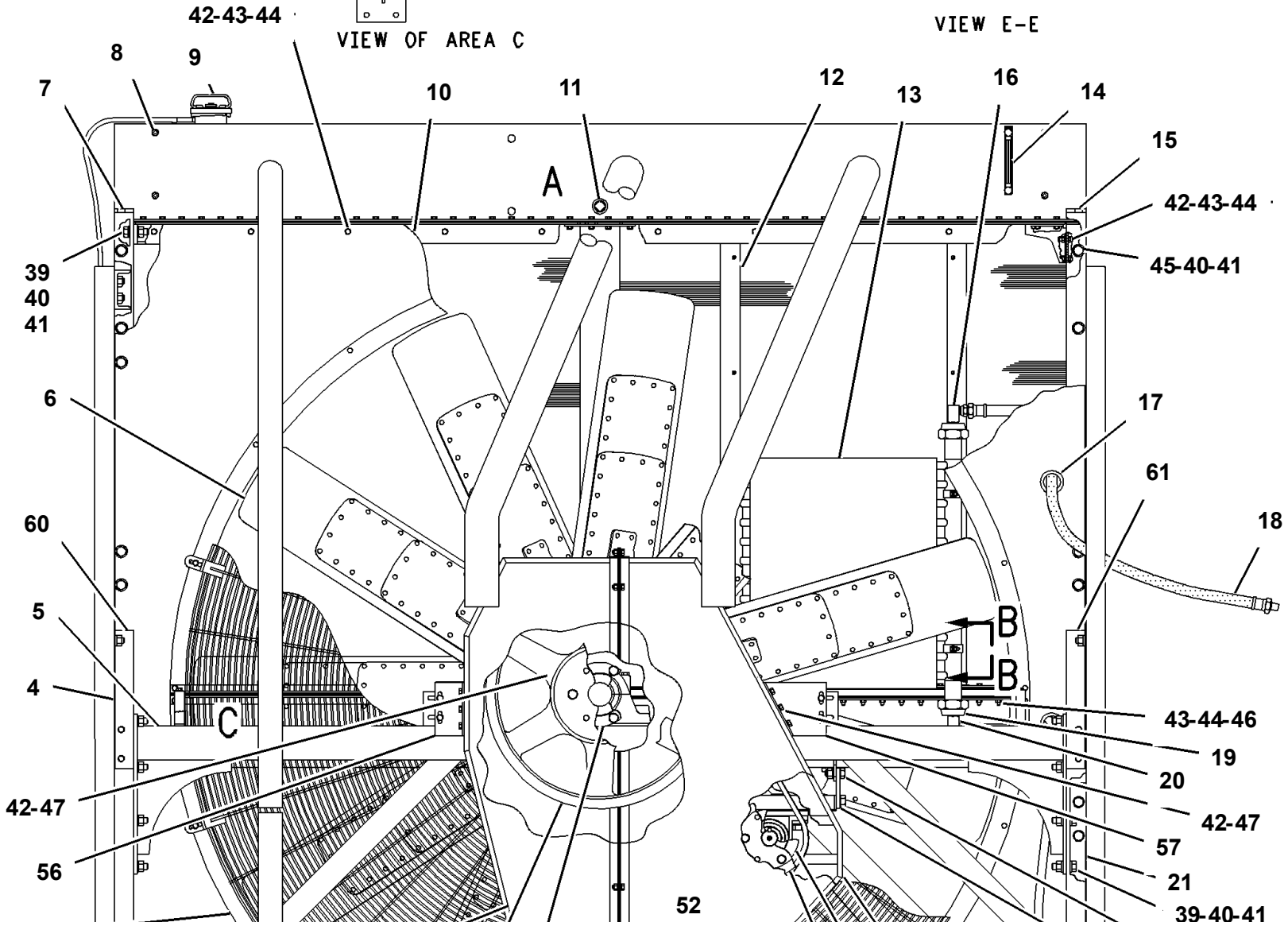
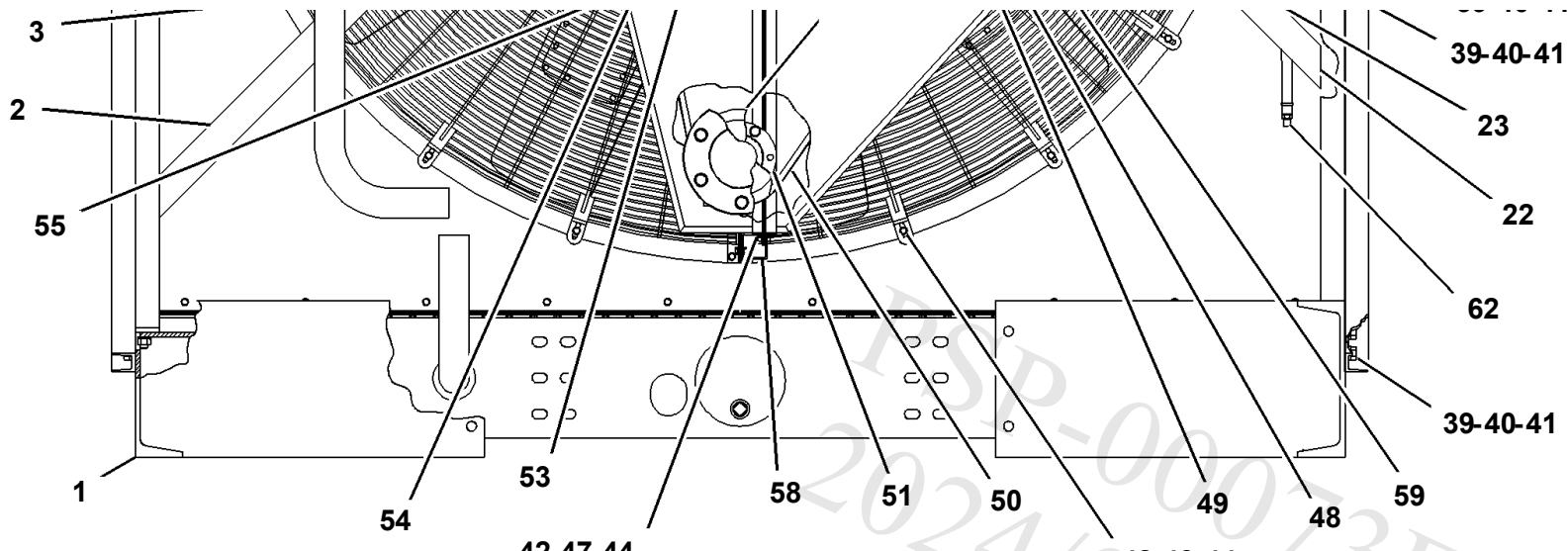


VIEW OF AREA C



VIEW E-E



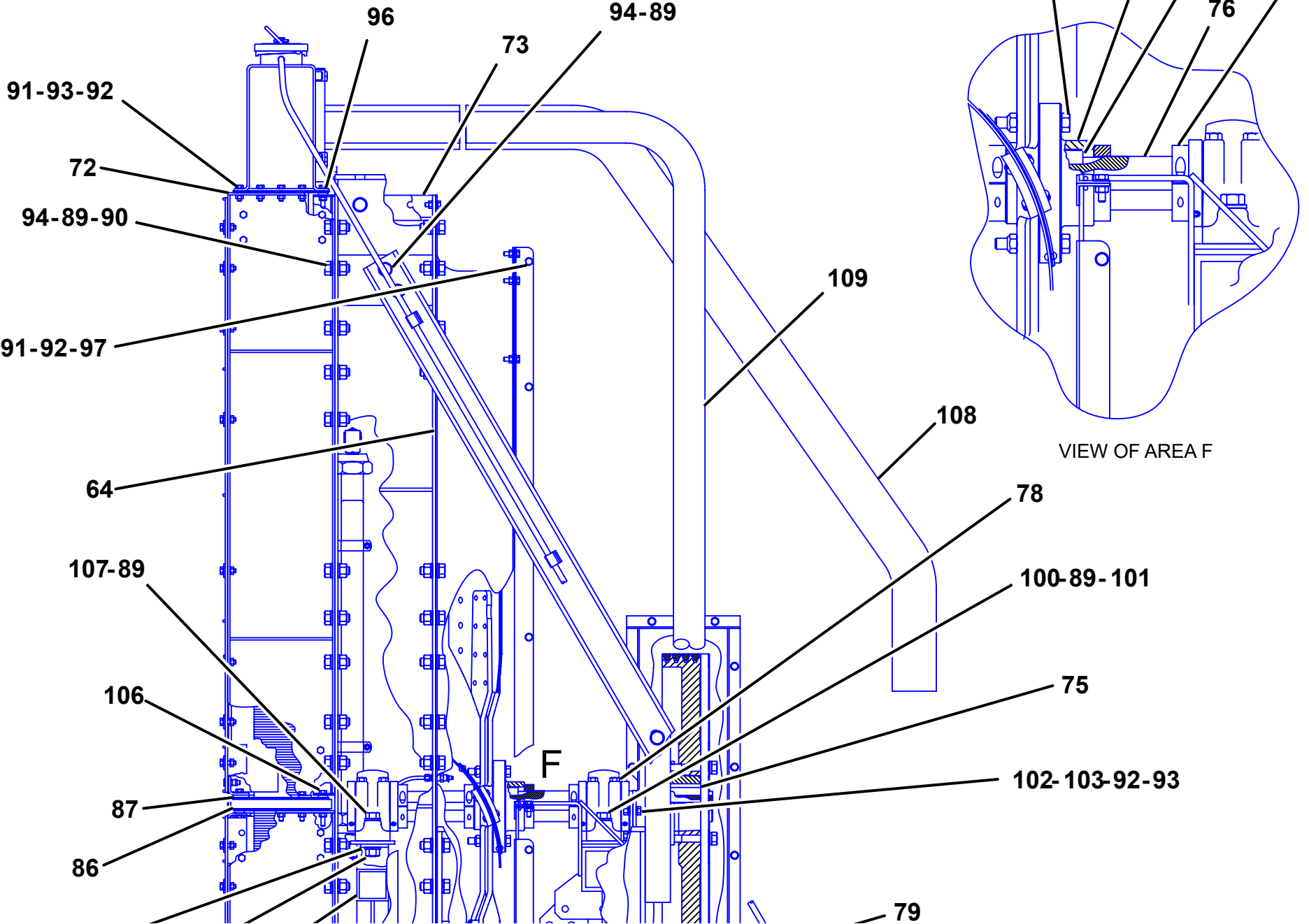


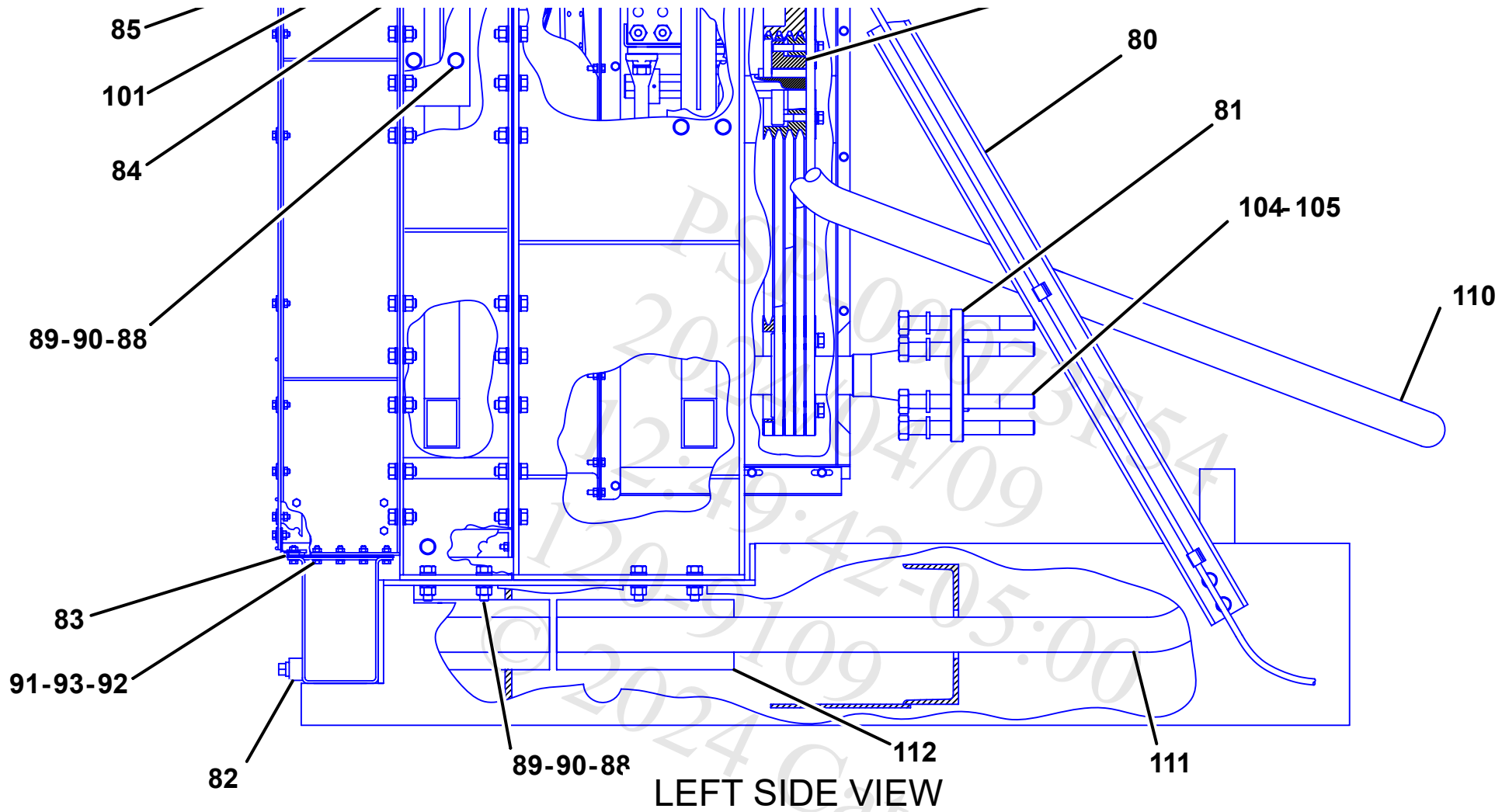
REFER TO ALL ILLUSTRATIONS OF THIS GROUP FOR AUXILIARY VIEWS

REAR VIEW

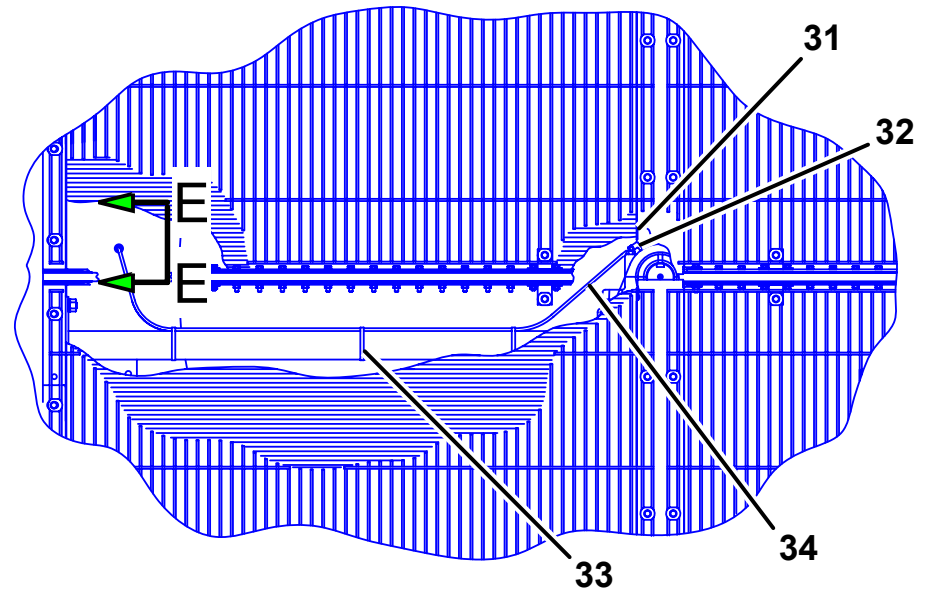
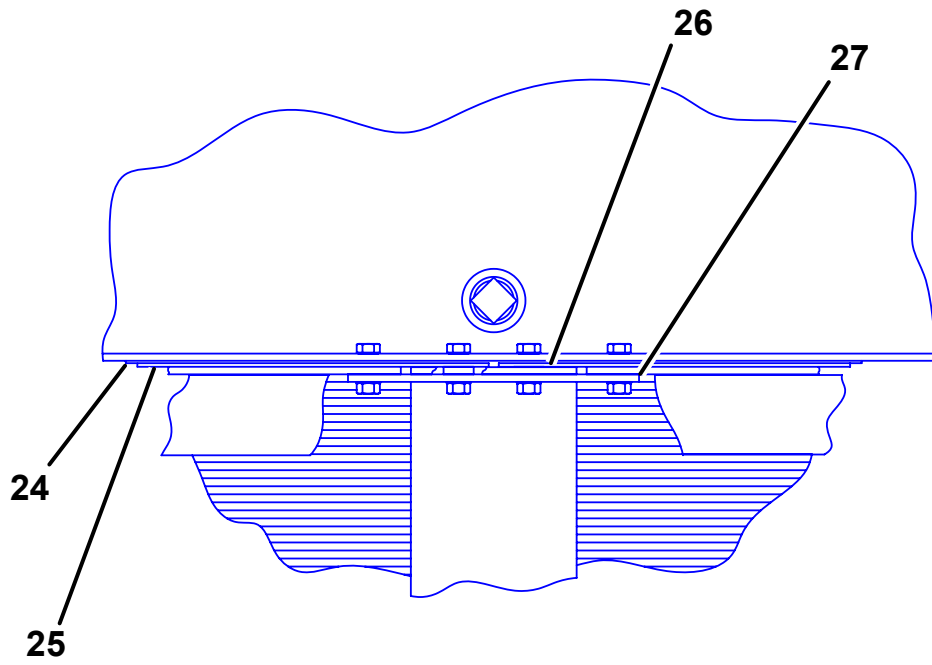
120-9109
 © 2024 Caterpillar Inc.
 12:49:42-05:00
 120-9109-00073F54

REFER TO ALL ILLUSTRATIONS OF THIS GROUP FOR AUXILIARY VIEWS

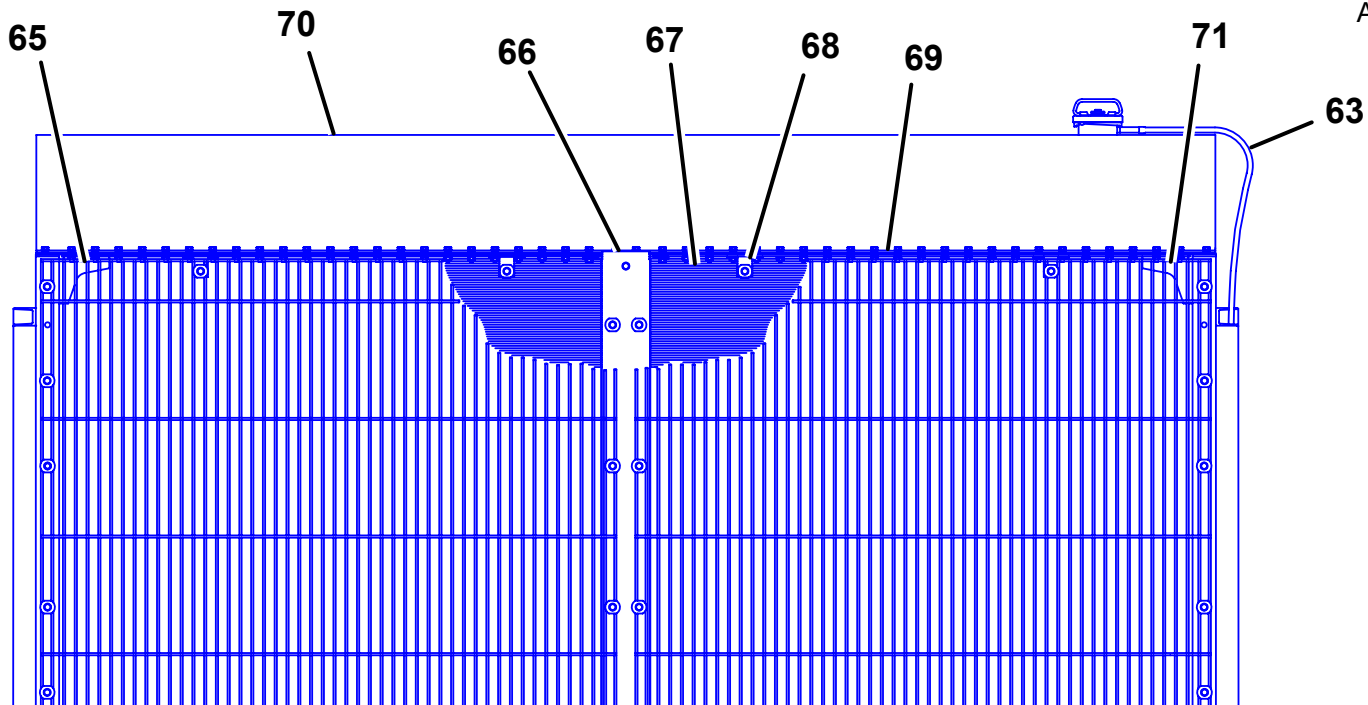


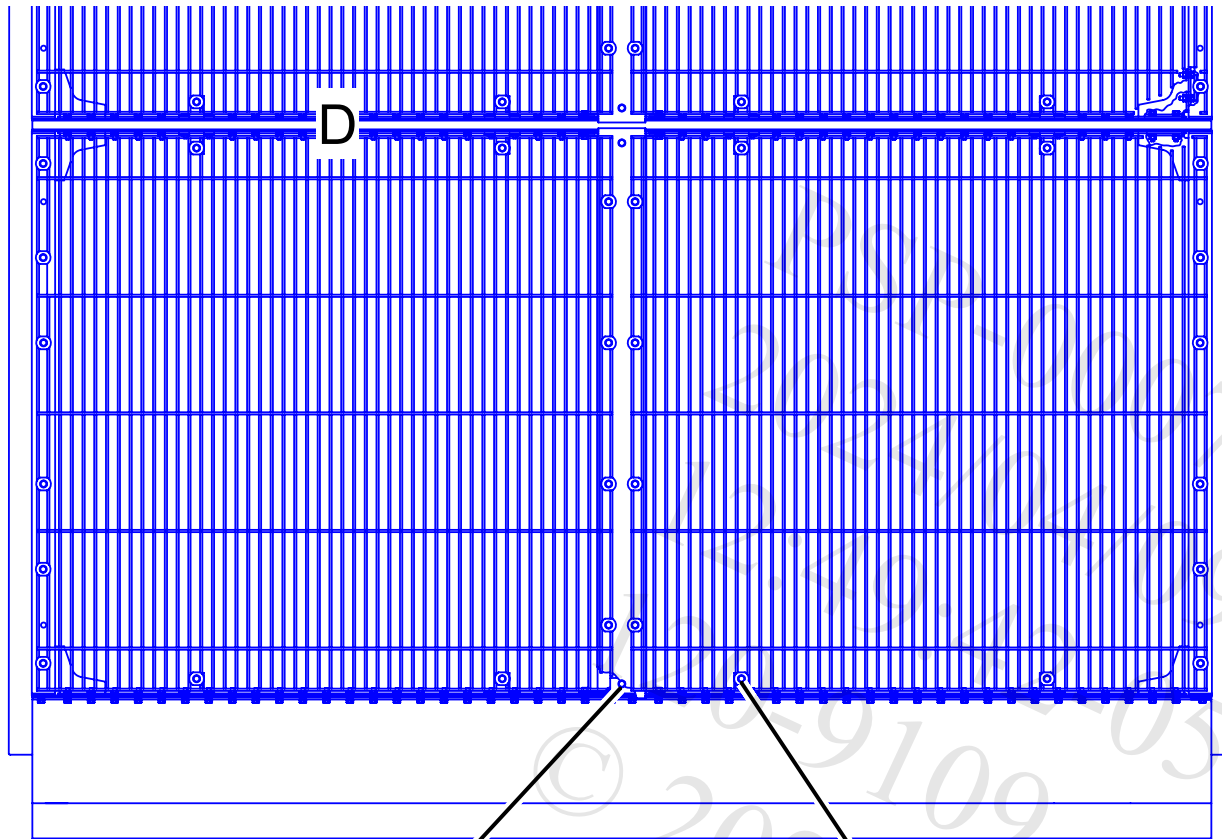


PS 2024-09-23 15:42:09
2024-09-23 15:42:09
Caterpillar Inc.



VIEW
OF
AREA
D

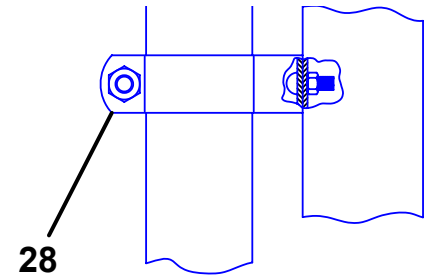




92-91

FRONT
VIEW

91-92-93-95



28

VIEW
B-B

© 2024 Caterpillar Inc. 3F54
2024-09-10 05:00

120-9109 RADIATOR & FAN GP
S/N FDN1-UP
60-CVD, 0.374 FAN DRIVE RATION
PART OF 120-9110 RADIATOR & FAN GP
AN ATTACHMENT

Image #	Callout #	Part Number	Part Name	Quantity
Group Part				
		120-9109	Radiator & Fan GP	
Part List Items				
1	1	131-9069	Frame AS	1
1	2	125-6323	Brace	3
1	3	131-9063	Guard-Fan	4
1	4	131-9064	Support	1
1	5	127-8083	Support AS	1
1		124-0138	Bracket	2
1	6	116-1409	Fan AS (Blower, 7-BLADE Or 11-BLADE)	1
1	7	131-9061	Channel AS	1
1	8	5M-6213	Plug-Pipe (1/4-18-THD)	4
1	9 CCR	123-9362	Cap-Filler (7-PSI)	1
1	10	131-9062	Plate	1
1	11	3B-0551	Plug-Pipe	4
1	12	125-6322	Support AS	2
1	13	7E-6633	Cooler-Fuel	1
1	14 CCR	123-9316	Gauge-Sight (Coolant Level)	1
1	15	129-2312	Channel AS	1
1	16	2H-3939	Elbow	1
1	17 CCR	1S-1014	Grommet	2
1	18 CCR	3N-4906 I	Hose AS	1
1	19	6B-9081	Adapter	2
1	20	2L-8228	Elbow	1
1	21	131-9065	Support	1
1	22	125-6291	Brace	1
1	23	123-9346 Y	Idler AS	1
3	24	125-6298	Plate-Washer	16
3	25	9Y-5994	Plate-Washer	8

Image #	Callout #	Part Number	Part Name	Quantity
3	26	9Y-5995	Plate-Washer	4
3	27	110-2991	Strap-Corewasher	8
3	28	4P-1701	Kit-Cooler Mounting (Fuel)	1
1	29	125-6327	Strap	2
1	30	125-6311	Strap-Fan Guard	2
3	31 CCR	6V-2495 D	Seal (1-M)	
3	32	125-6282	Elbow	1
3	33 CCR	7K-1181	Strap-Cable	3
3	34 CCR	5P-6011 D	Tube (0.2-M)	
1	35	125-6283	Connector	1
1	36 CCR	8T-4896	Washer-Hard (10.2X18.5X2.5-MM Thk)	1
1	37	125-6284	Coupling	1
1	38 CCR	125-6288	Cap-Grease	1
1	39	7X-0346	Bolt (5/8-11X2-IN) (5/8-11X2-IN)	32
1	40	8T-4122	Washer-Hard (17X32X3.5-MM Thk)	108
1	41	7X-0448	Nut (5/8-11-THD)	56
1	42	4M-6425	Bolt (5/16-18X1-IN)	140
1	43 CCR	7H-3937	Lockwasher	330
1	44	6V-8189	Nut (5/16-18-THD)	207
1	45	8T-9393	Bolt (5/8-11X1.5-IN)	24
1	46	8T-8911	Bolt (5/16-18X2-IN)	113
1	47 CCR	8T-4224	Washer-Hard (8.8X16X2-MM Thk)	38
1	48	124-0147	Bushing	1
1	49	124-0145	Sheave	1
1	50 CCR	124-0150	V-Belt Set	1

Image #	Callout #	Part Number	Part Name	Quantity
			(Includes 5-BELTS)(FAN Drive)	
1	51	124-0148	Bushing	1
1	52	125-6326	Sheave	1
1	53	124-0149	Bushing	1
1	54	124-0146	Pulley	1
1	55	125-6314	Guard	1
1	56	123-9402	Bracket	1
1	57	123-9401	Bracket-Mounting	1
1	58	125-6313	Bracket	1
1	59	125-6315	Guard	1
1	60	131-9068	Bracket	1
1	61	131-9067	Bracket	1
1	62 CCR	8N-1186 I	Hose AS	1
3	63 CCR	5P-1420 E	Hose (336-CM)	
2	64 CCR	125-6277	Clip-Hose	5
3	65	9Y-6003	Bracket-Corner	8
3	66	125-6297	Spacer (Core)	2
3	67	125-6292	Core AS-Radiator	4
3	68	9Y-6005	Bracket AS-Guard	24
3	69	125-6305	Guard	4
3	70	129-2322	Tank-Top	1
3	71	9Y-6004	Bracket-Corner	8
2	72	125-6299	Channel AS	4
2	73	125-6301	Channel	2
2	74	123-9368	Hub-Fan	1
2	75 CCR	125-5858	Key (Square)	2
2	76	123-9327	Shaft-Fan	1
2	77	125-6289	Collar AS	4
2	78 CCR	123-9328	Bearing	2
2	79 CCR	125-5857	Key	1
2	80	131-9066	Brace	2

Image #	Callout #	Part Number	Part Name	Quantity
2	81	129-2288	Shaft (Stub)	1
2	82	129-2323	Tank-Bottom	1
2	83 CCR	125-6300	Gasket	8
2	84	283-3460	Support	1
2	85	123-9330	Plate	2
2	86	129-2311	Tank-Center	1
2	87	9Y-5998	Bracket-Washer	4
2	88	7X-0346	Bolt (5/8-11X2-IN) (5/8-11X2-IN)	16
2	89	8T-4122	Washer-Hard (17X32X3.5-MM Thk)	100
2	90	7X-0448	Nut (5/8-11-THD)	44
2,3	91	4M-6425	Bolt (5/16-18X1-IN)	268
2,3	92 CCR	7H-3937	Lockwasher	494
2,3	93	6V-8189	Nut (5/16-18-THD)	278
2	94	8T-9393	Bolt (5/8-11X1.5-IN)	32
3	95	9Y-6007	Washer-Flange	56
2	96	8C-3121	Bolt (5/16-18X1.5-IN)	2
2	97 CCR	031-4155	Locknut (5/16-18-THD)	20
2	98	0L-1732	Bolt (1/2-20X3-IN)	6
2	99 CCR	2K-0564	Locknut (1/2-20-THD)	6
2	100	7X-0362	Bolt (5/8-11X7-IN)	2
2	101 CCR	3K-2889	Locknut (5/8-11-THD)	4
2	102	6V-8918	Bolt (5/16-18X1.25-IN)	4
2	103 CCR	8T-4224	Washer-Hard (8.8X16X2-MM Thk)	4
2	104	9F-8122	Bolt (1-14X9-IN)	6

Image #	Callout #	Part Number	Part Name	Quantity
2	105 CCR	3B-4516	Lockwasher	6
2	106	5P-2955	Bolt (5/16-18X2.5-IN)	2
2	107	7X-0352	Bolt (5/8-11X4-IN)	2

Image #	Callout #	Part Number	Part Name	Quantity
2	108	126-7314	Tube AS	2
2	109	126-7312	Tube	1
2	110	126-7311	Tube	1
2	111	126-7313	Tube	1
2	112	126-7320	Tube	1

D - Order By The Meter

E - Order By The Centimeter

I - Refer To Hydraulic Information System

Y - Separate Illustration

PSR-00073F54
2024/04/00
12:40